

A River Runs Through It

Collaborative Strategies for the Future of the Crooked River



Bill Nasham



Bruce Scanlon



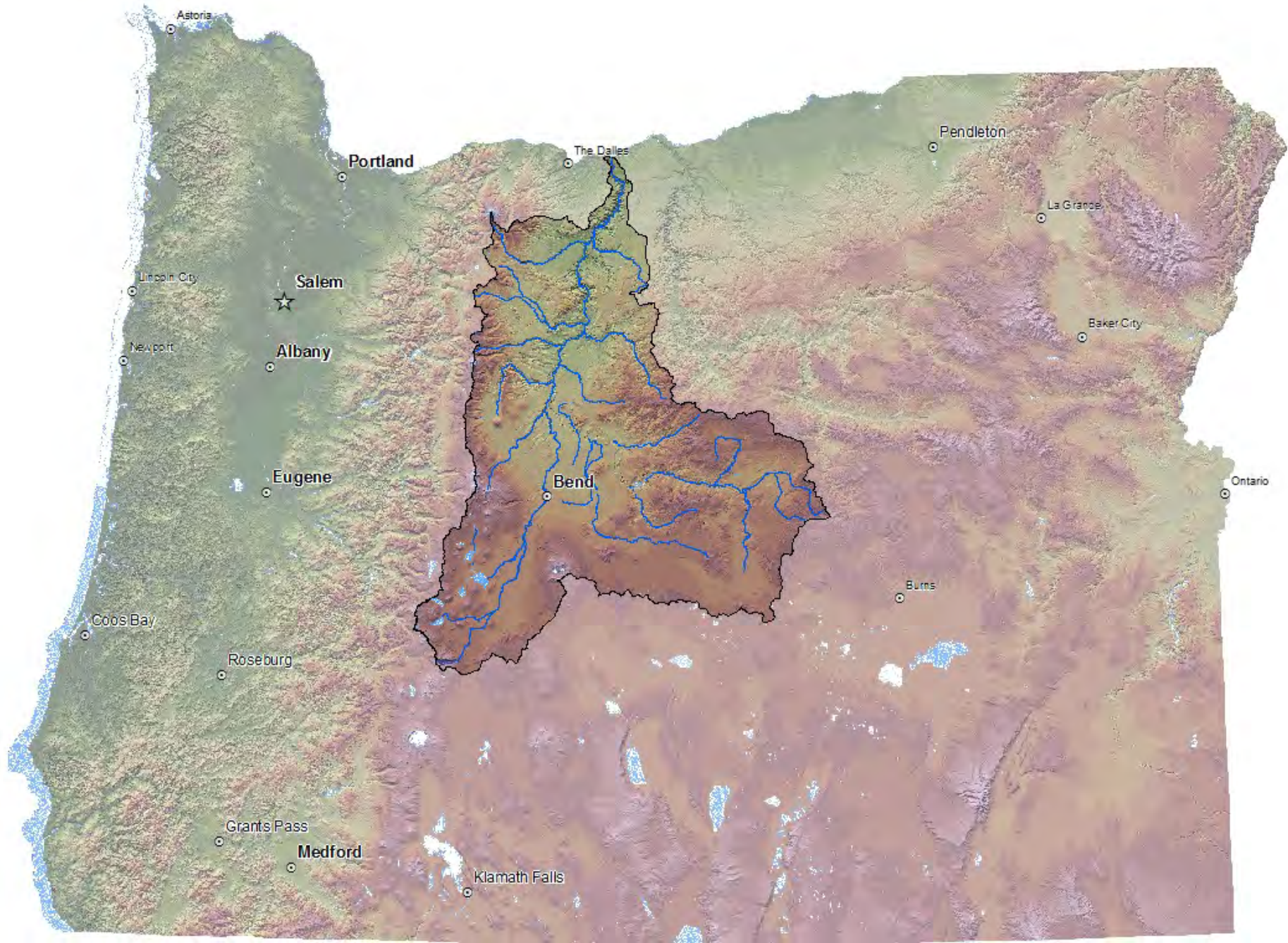
Peter Lickwar



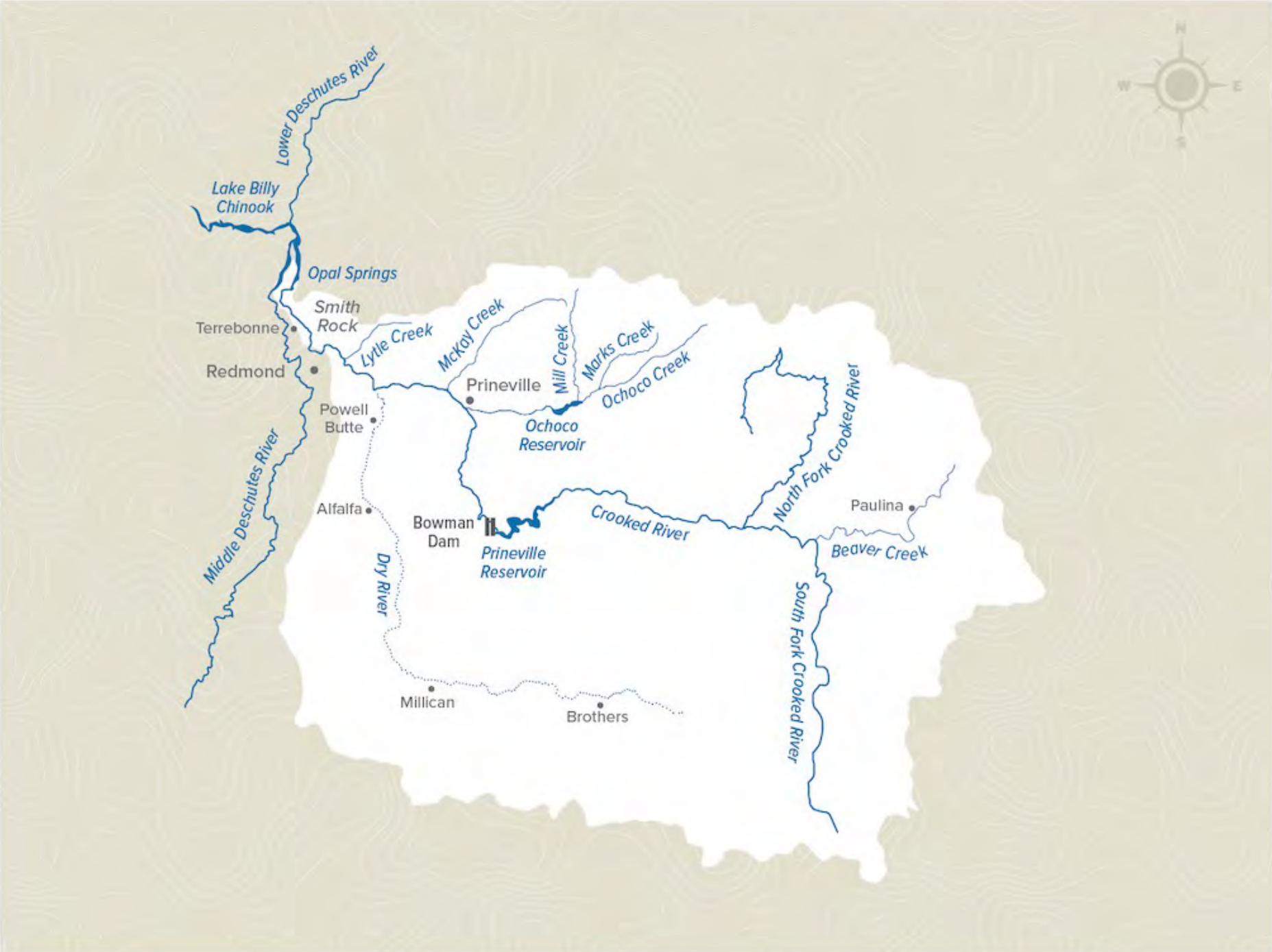
Lisa Seales

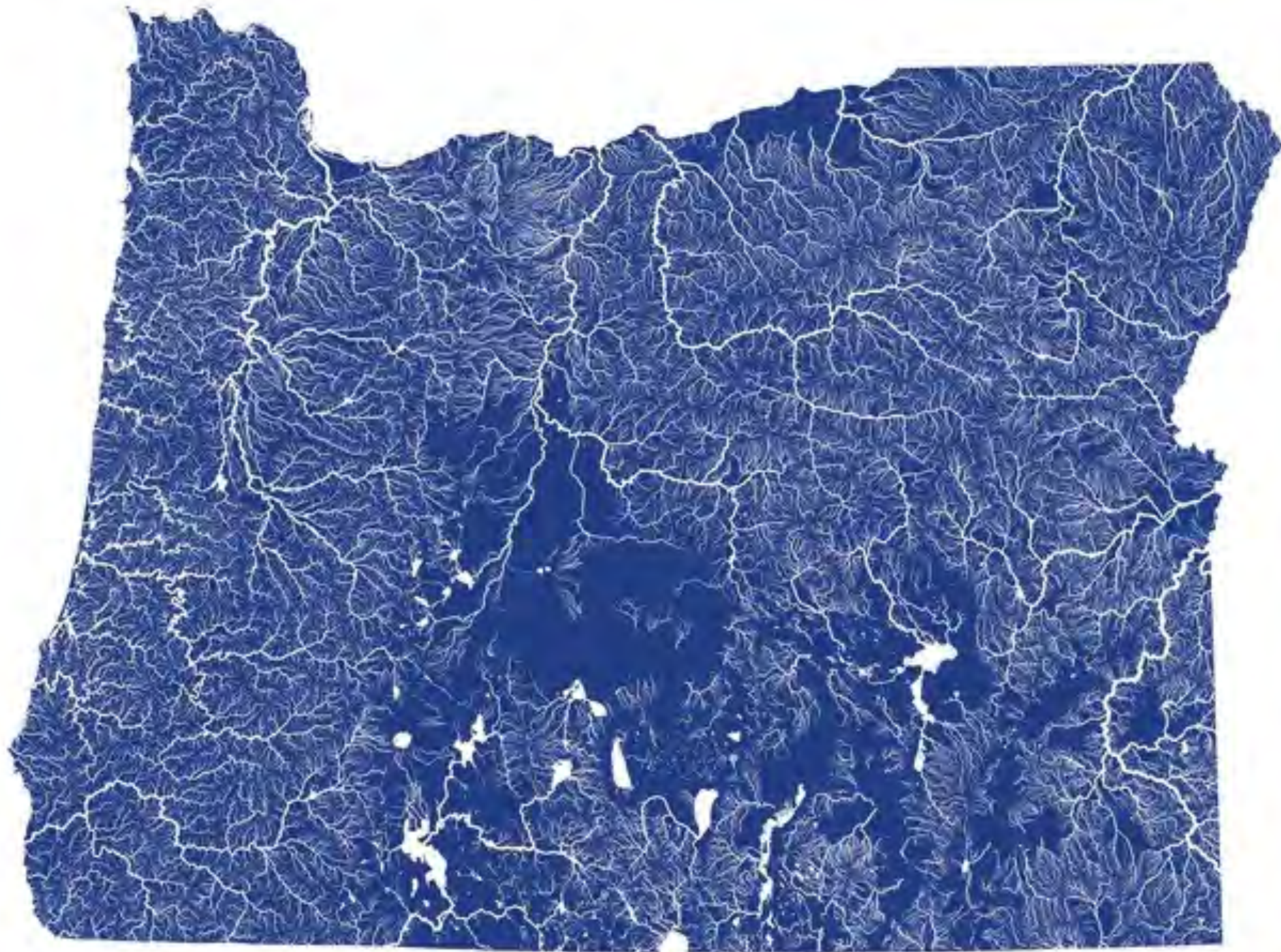


DESCHUTES RIVER
CONSERVANCY









History of Farming in Crook County

Jeff Evans near Grimes Flat 1910



Harvest Slayton Ranch 1900

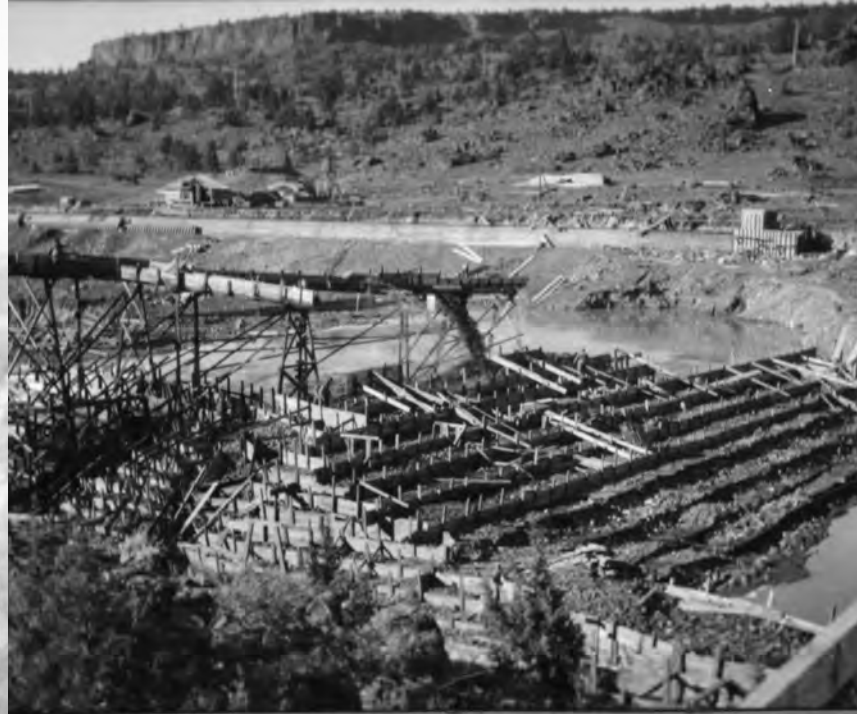
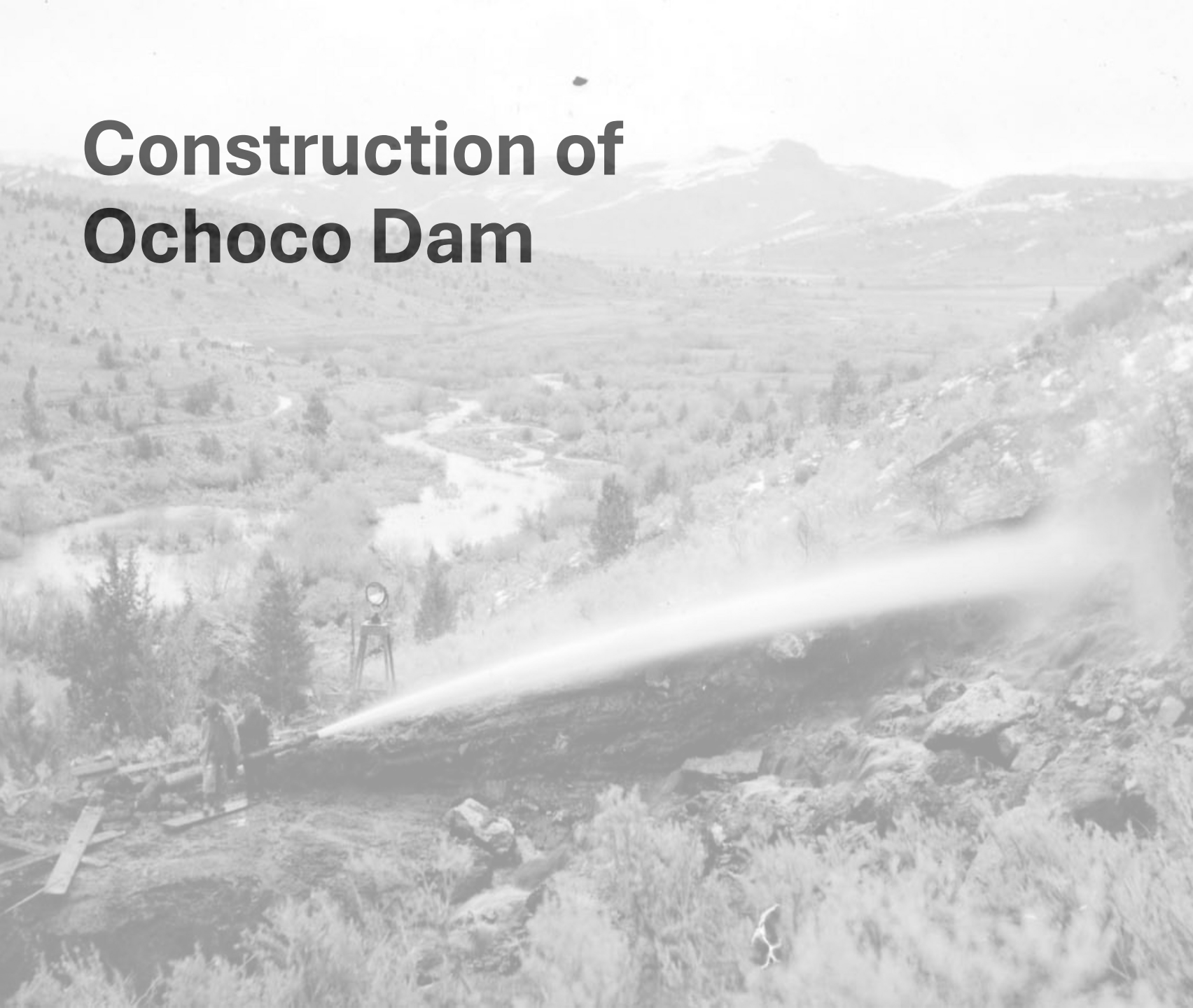
2429



Johnson Creek



Construction of Ochocho Dam



Flooding in the Prineville Valley

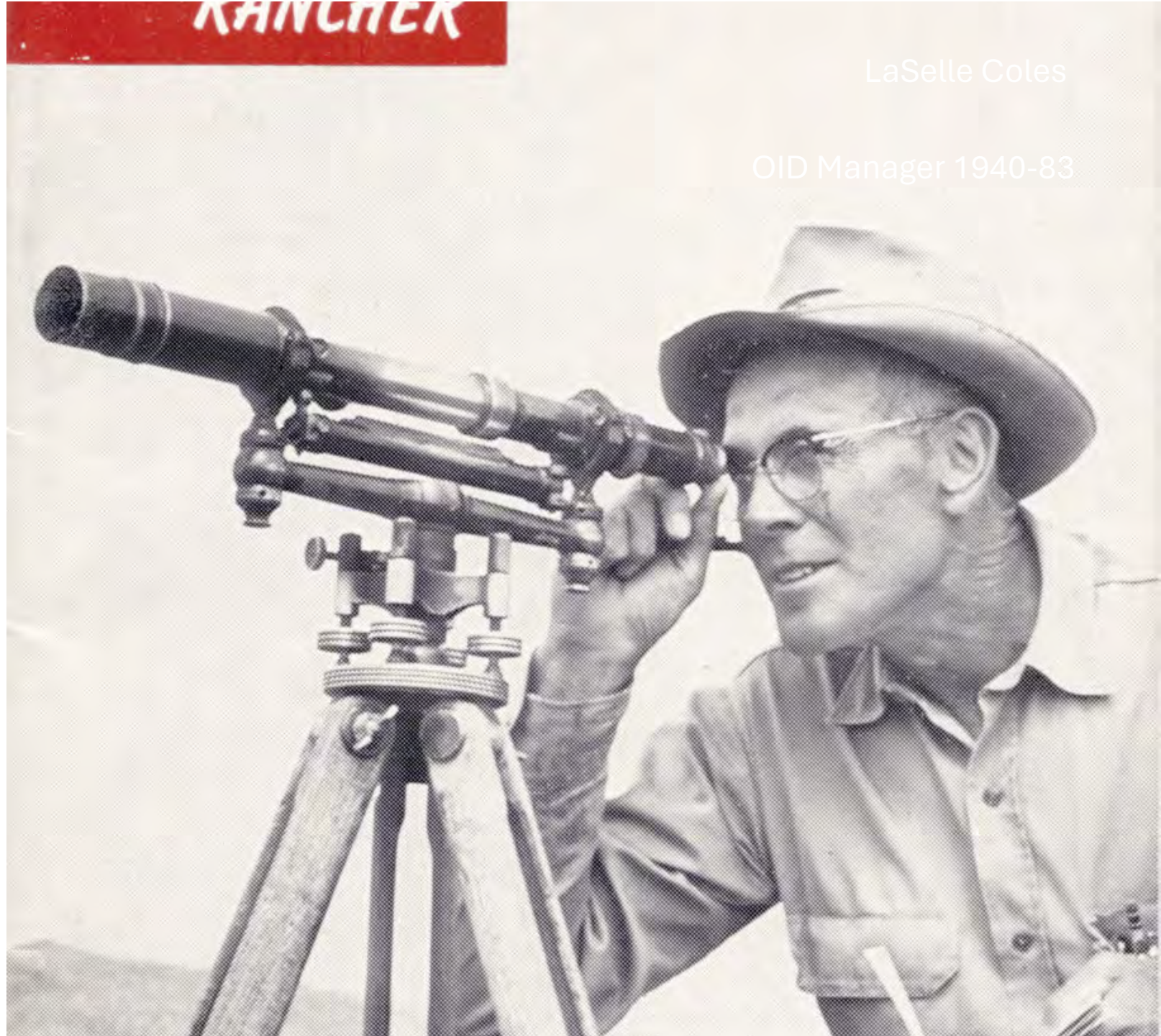
1941



1952



The Crooked River Project



LaSelle Coles

OID Manager 1940-83

Prineville Dam

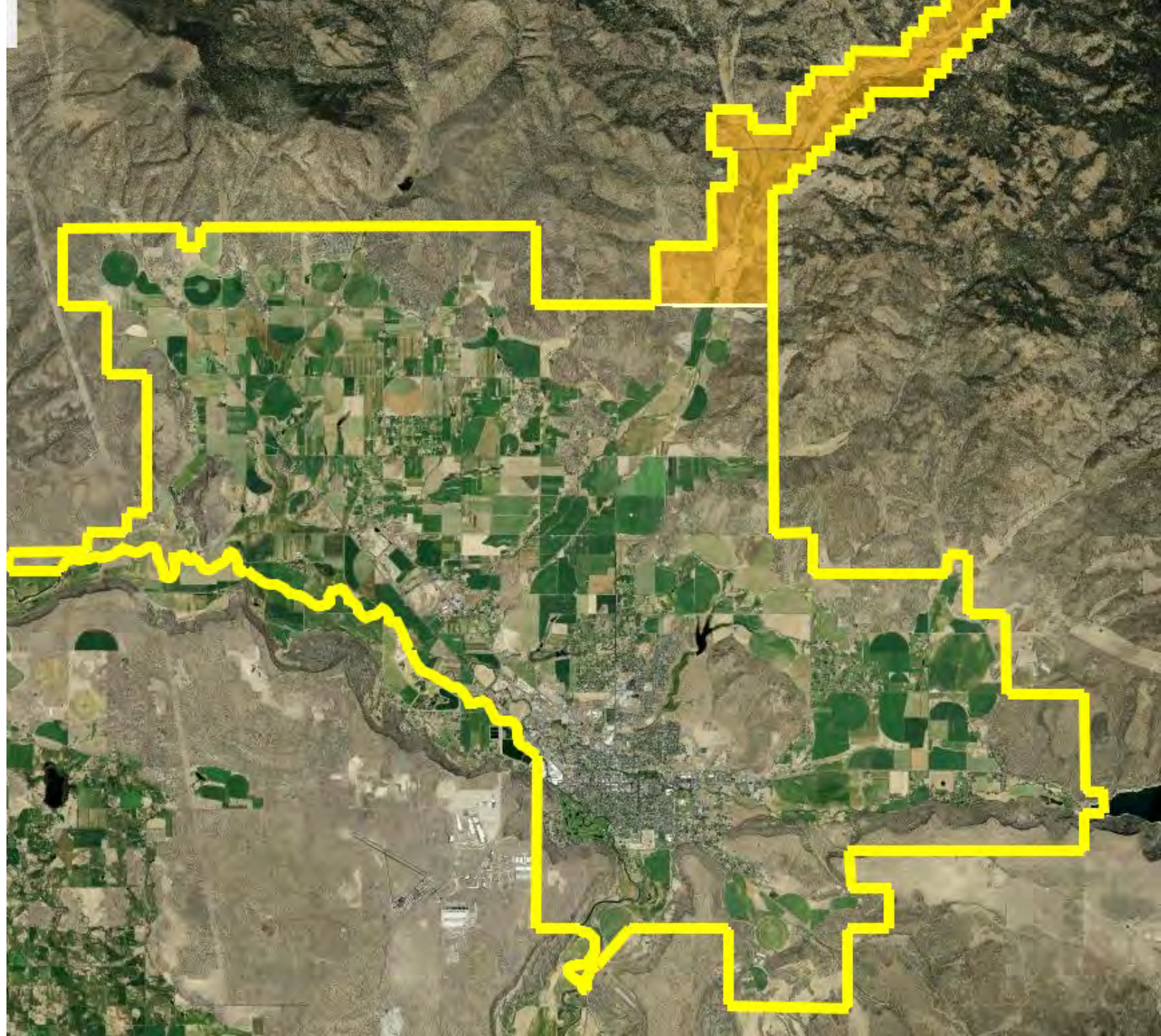


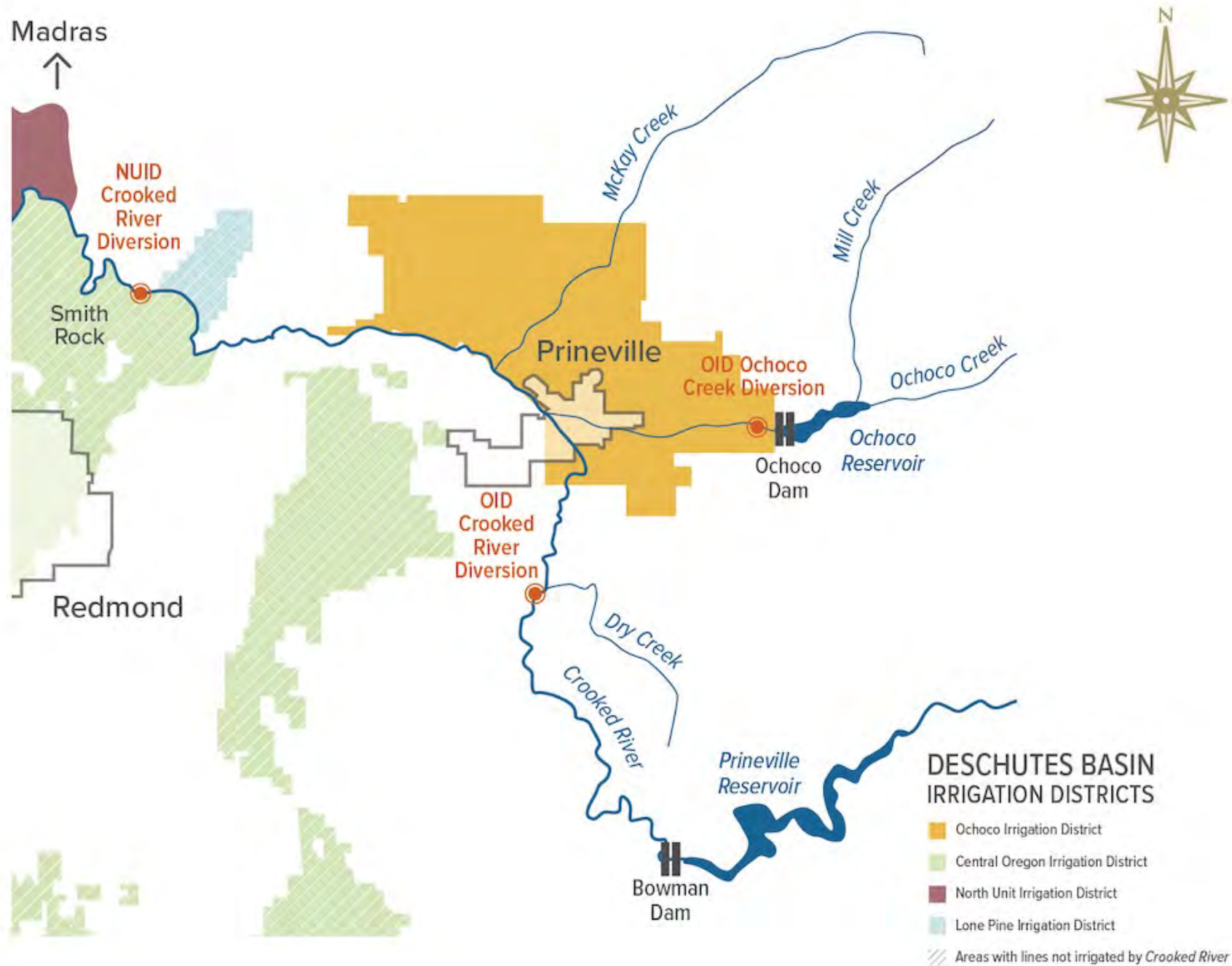
1962: Water is Brought to Town



OID Today

- Owns and operates Ochocho Dam
- Operates Bowman Dam under contract with Reclamation
- Conveys water through ~120 miles of canals, ditches and pipes
- Operates and maintains more than 30 pumps to lift water
- Services and maintains infrastructure, which is up to 108 years old
- Serves nearly 900 patrons, who irrigate over 20,000 acres





Crooked River Geology

- Much different than the Upper Deschutes River
- Flows through John Day and Clarno Formation rocks (volcaniclastic muds and debris, lake sediments)
- This leads to much less long-term storage/losses to aquifer
- Makes for a very flashy hydrologic system

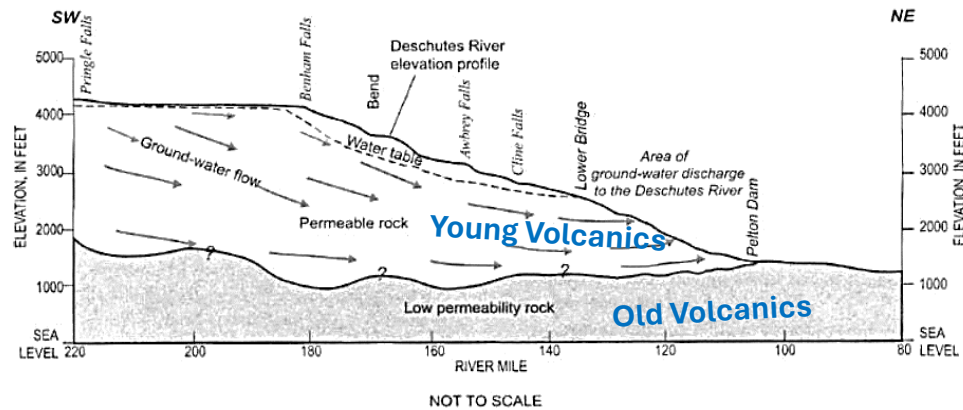
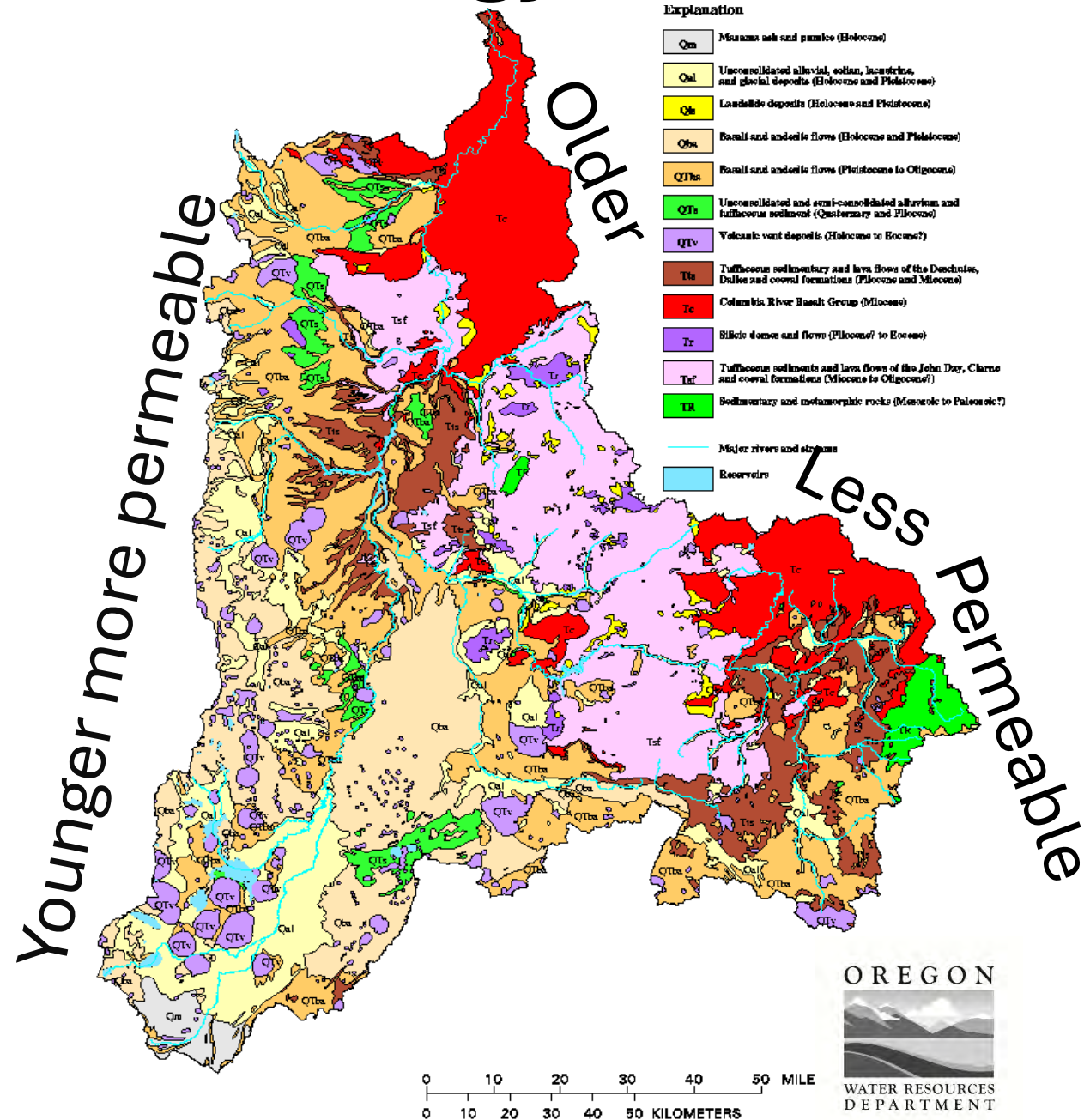
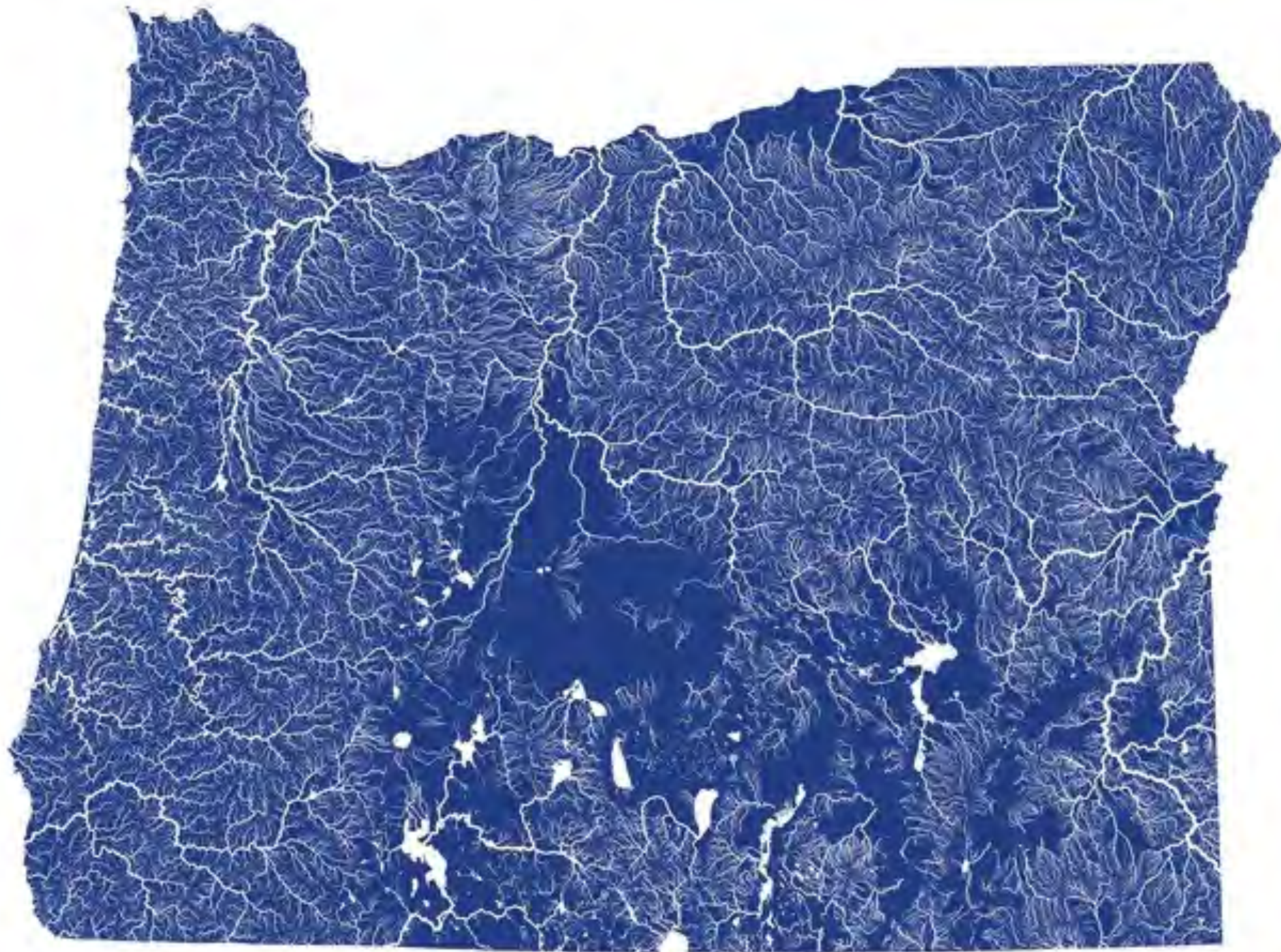
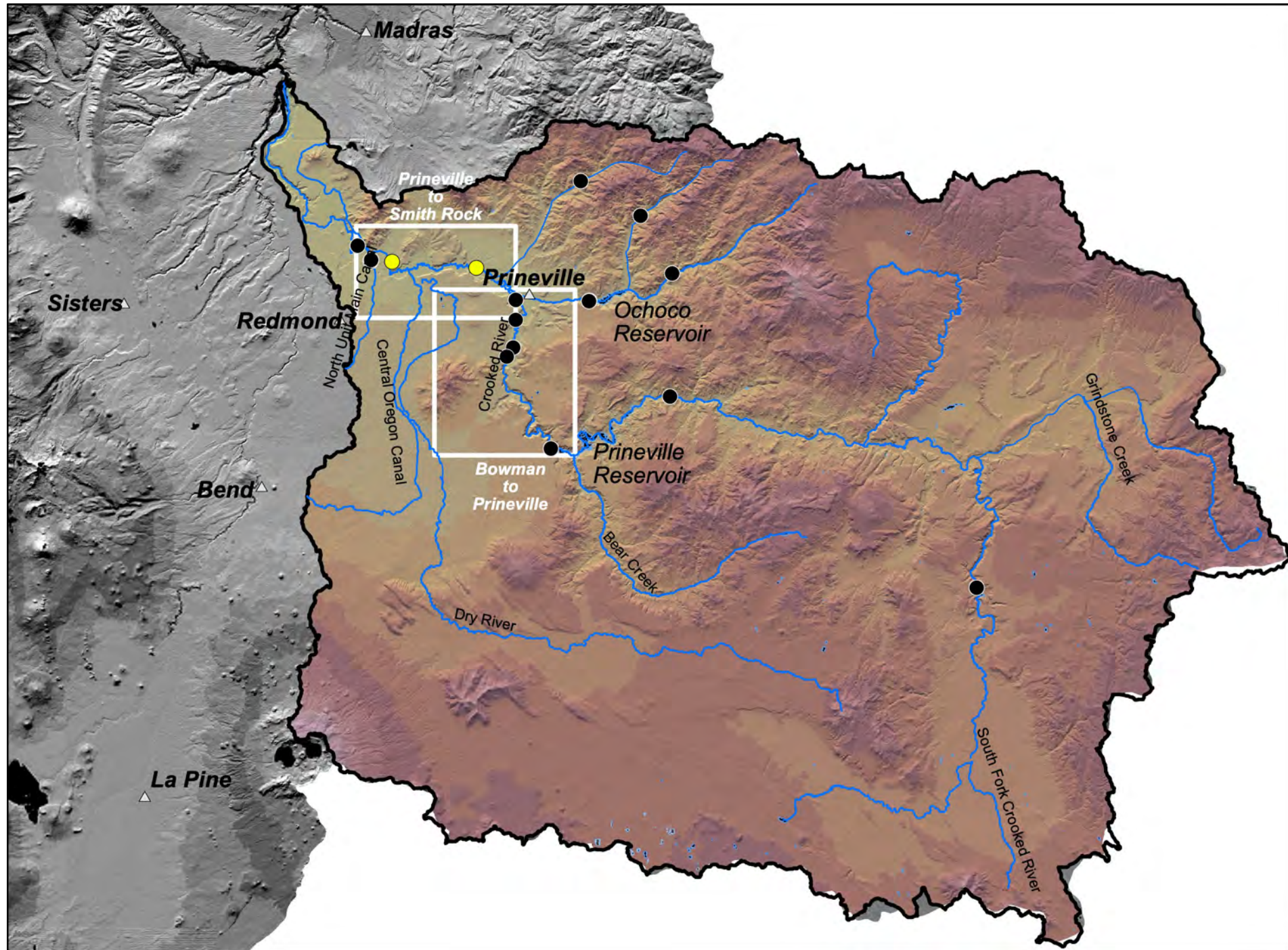


Figure 18. Diagrammatic section showing the effect of geology on ground-water discharge along the Deschutes River upstream of Pelton Dam.





Crooked River Basin Overview



Bowman Dam to Prineville

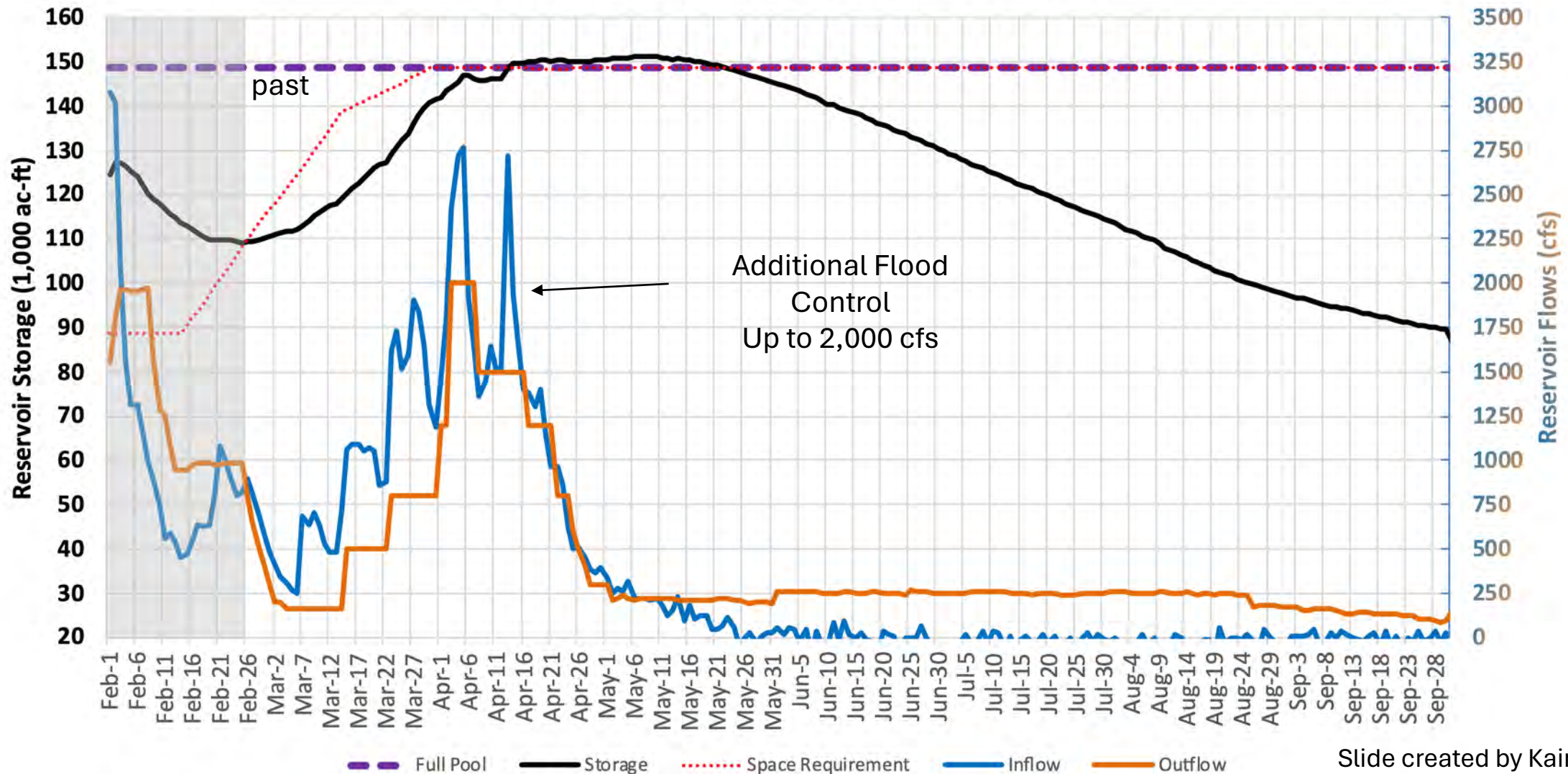


Prineville to Smith Rock



Current Basin Conditions + Normal Future Weather Conditions Likely Resulting in Near Normal Runoff Scenario

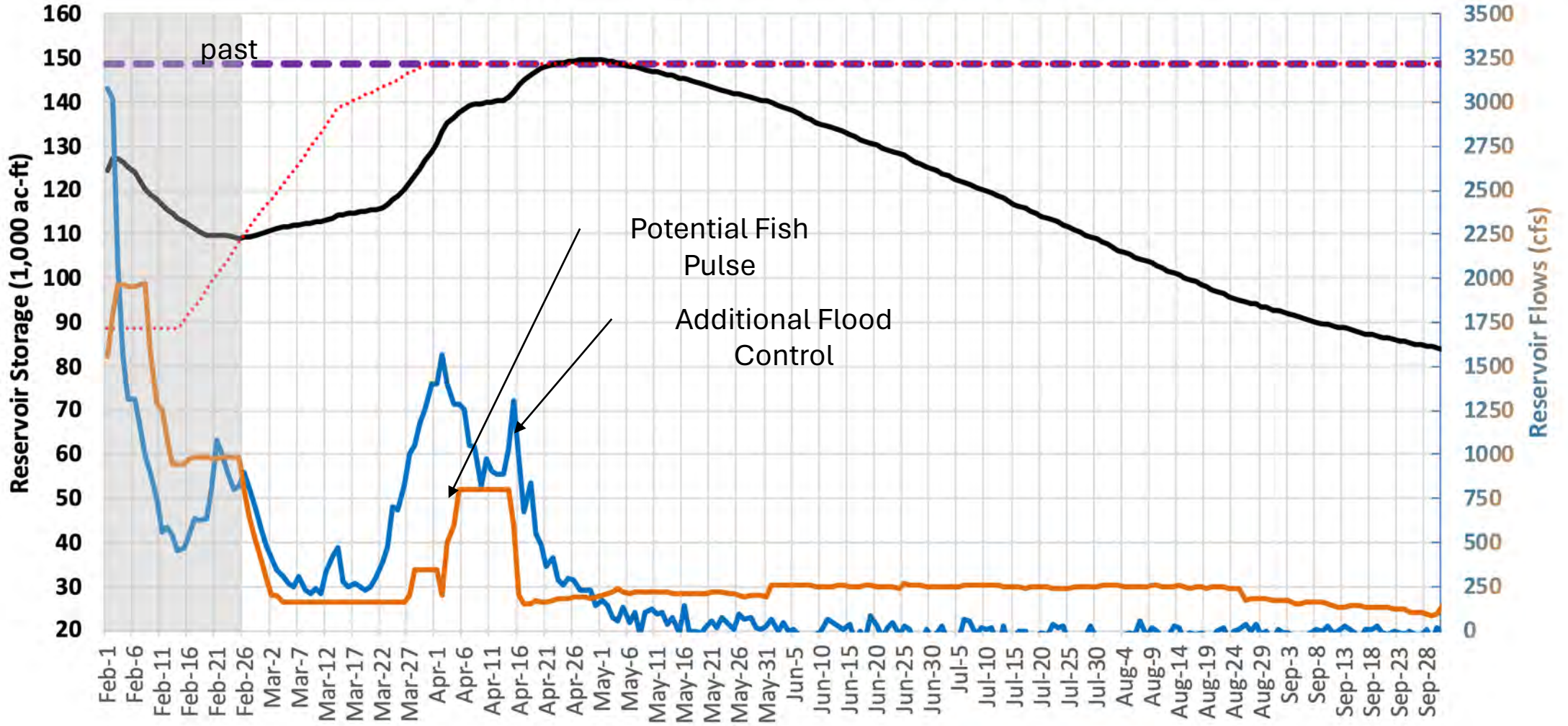
Bowman Dam - Prineville Reservoir



Current Basin Conditions + Dry Future Weather Conditions

Likely Resulting in Below Normal Runoff Scenario

Bowman Dam - Prineville Reservoir

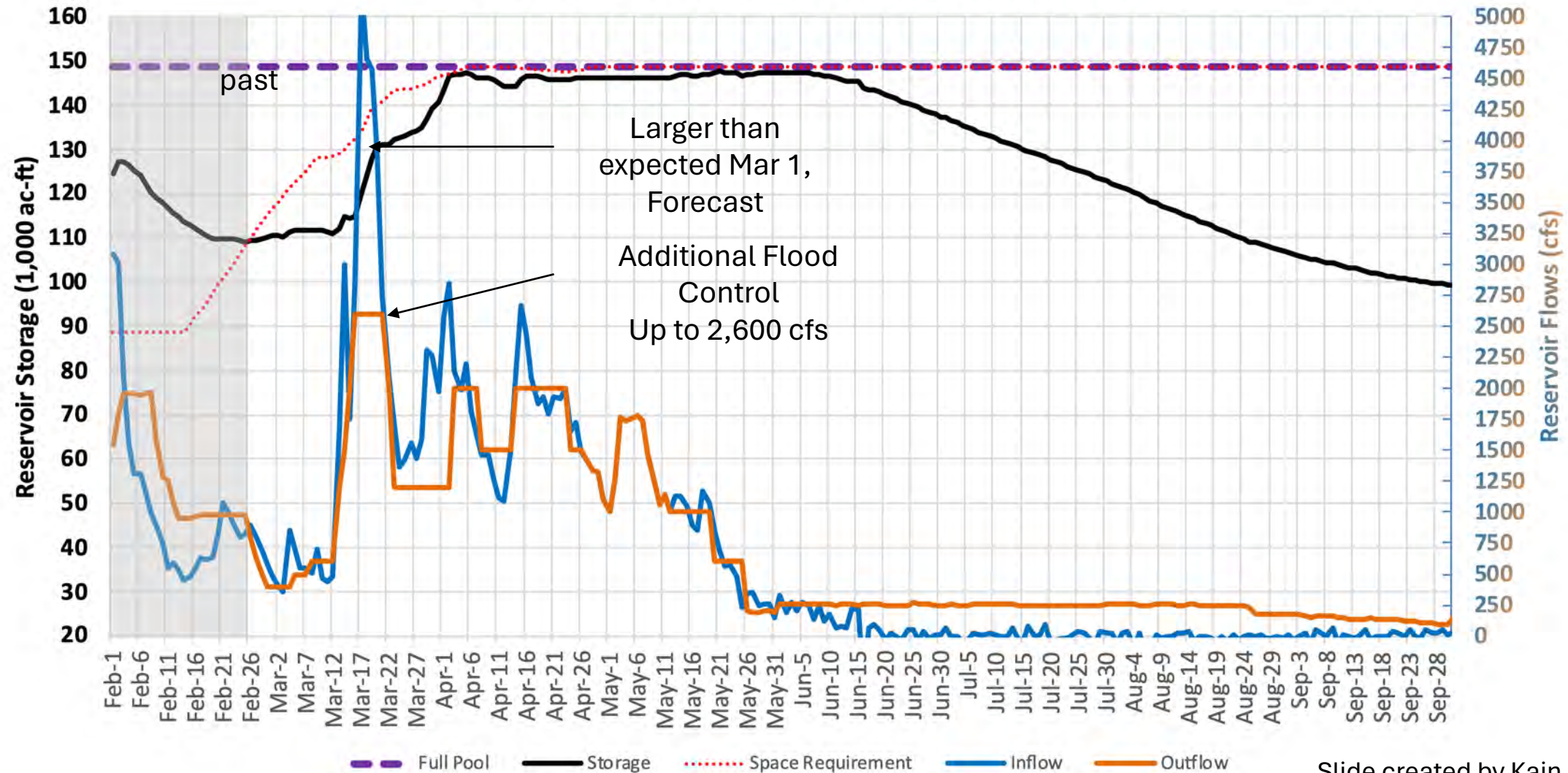


— Full Pool
 — Storage
 ⋯ Space Requirement
 — Inflow
 — Outflow



Current Basin Conditions + Wet Future Weather Conditions Likely Resulting in Above Normal Runoff Scenario

Bowman Dam - Prineville Reservoir



H. R. 2640

One Hundred Thirteenth Congress
of the
United States of America

AT THE SECOND SESSION

*Begun and held at the City of Washington on Friday,
the third day of January, two thousand and fourteen*

An Act

To amend the Wild and Scenic Rivers Act to adjust the Crooked River boundary, to provide water certainty for the City of Prineville, Oregon, and for other purposes.

*Be it enacted by the Senate and House of Representatives of
the United States of America in Congress assembled,*

SECTION 1. SHORT TITLE.

This Act may be cited as the “Crooked River Collaborative Water Security and Jobs Act of 2014”.

Understanding the Crooked River Act of 2014

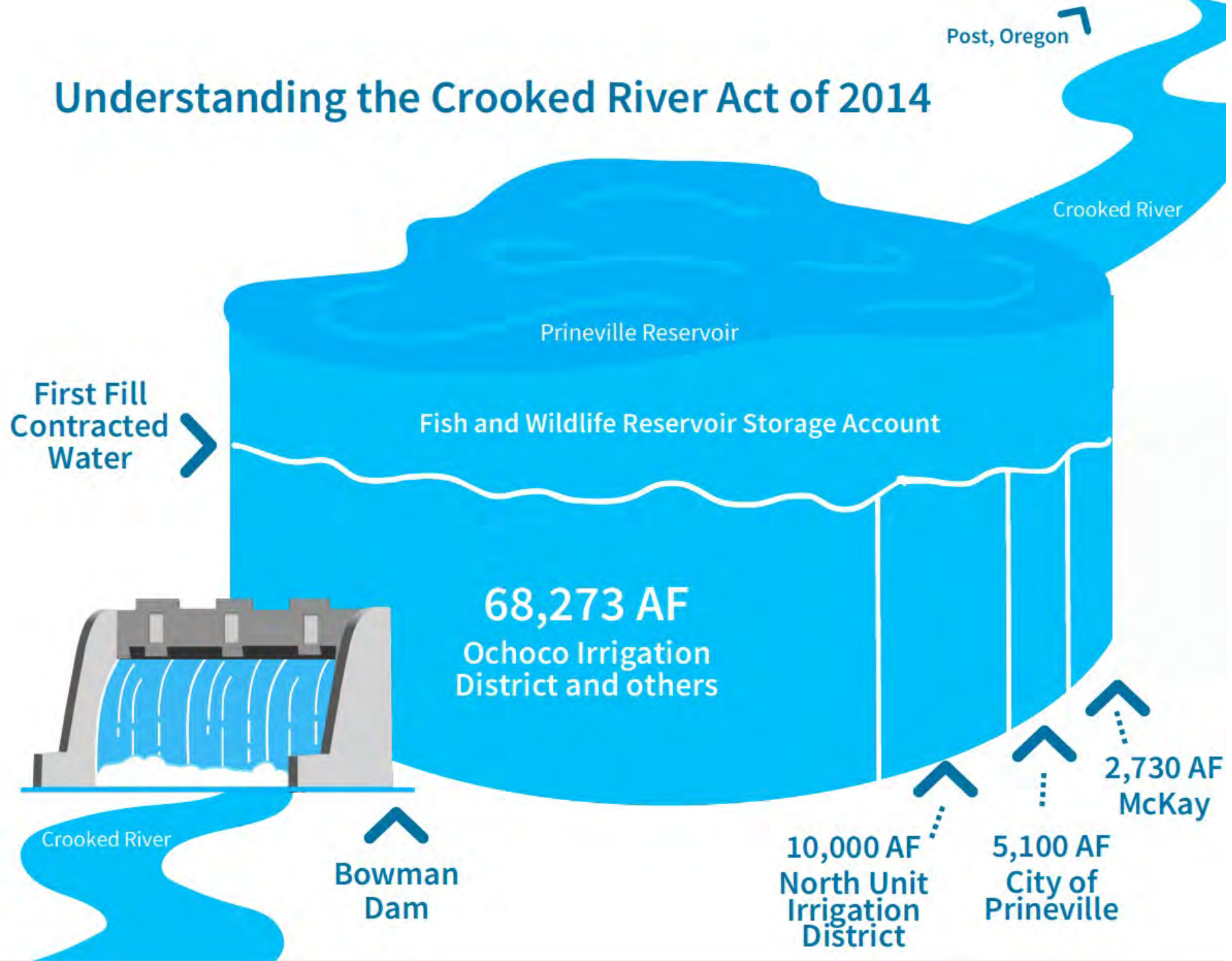






Photo credit: Michael Humling, U.S. Fish & Wildlife Service



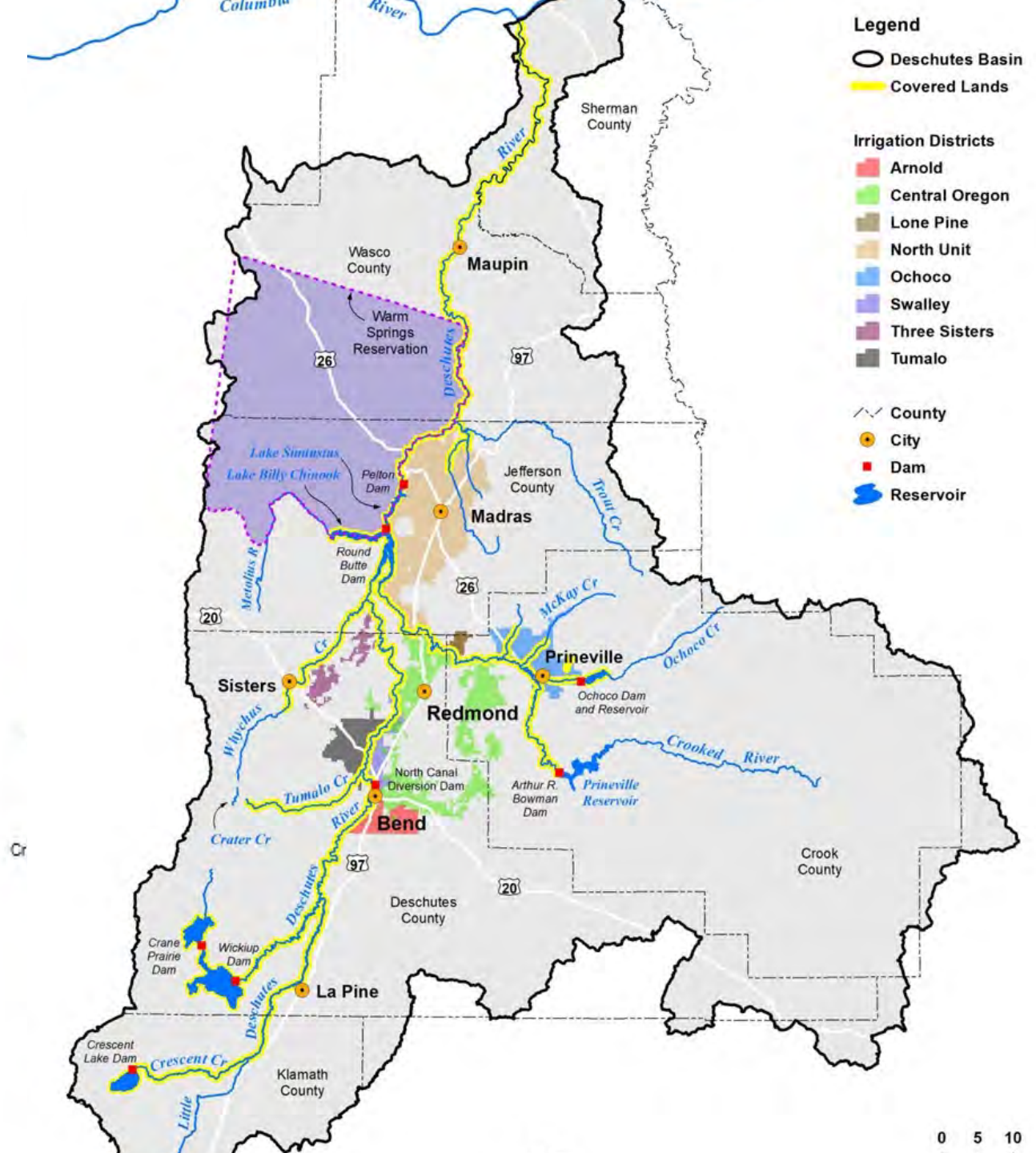
Photo: Joel Satore





Deschutes HCP: When and Where

- Approved December 31, 2020 for a 30-year permit term
- Deschutes Basin reservoirs and streams with ESA-listed species



Deschutes HCP: What

Covered species:

- FWS: Oregon spotted frog and bull trout
- NMFS: Mid-Columbia steelhead and sockeye salmon



Crooked River: Life Histories of Steelhead, Chinook & Redband

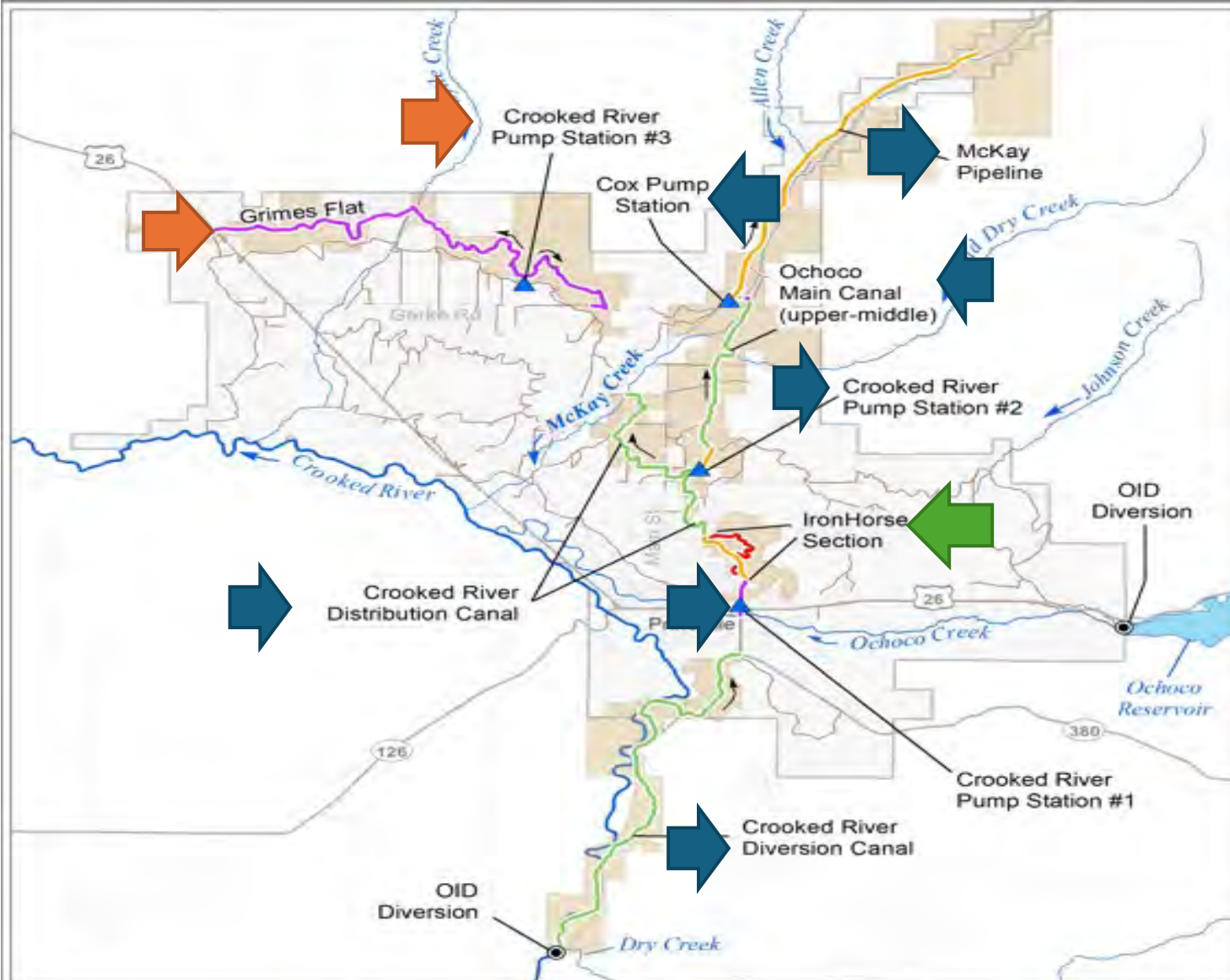
		Jan	Feb	Mar	Apr	May	Jun	Jul	Aug	Sep	Oct	Nov	Dec
Steelhead	Spawning	■		■	■	■		■		■		■	
	Egg Incubation & Emergence	■		■		■	■	■		■		■	
	Juvenile Rearing	■	■	■	■	■	■	■	■	■	■	■	■
	Juvenile Outmigration	■	■	■	■	■		■		■		■	
	Adult In-migration	■	■	■	■	■		■		■		■	
Chinook	Spawning	■		■		■		■	■	■	■	■	
	Egg Incubation & Emergence	■	■	■	■	■		■		■	■	■	■
	Juvenile Rearing	■	■	■	■	■	■	■	■	■	■	■	■
	Juvenile Outmigration	■	■	■	■	■		■		■		■	
	Adult In-migration	■		■		■		■	■	■	■	■	
Redband	Spawning	■		■	■	■	■	■		■		■	
	Egg Incubation & Emergence	■		■		■		■	■	■		■	
	Juvenile Rearing	■	■	■	■	■	■	■	■	■	■	■	■
	Juvenile Outmigration	■	■	■	■	■		■		■		■	
	Adult In-migration	■	■	■	■	■		■		■		■	

Resident Juvenile





Resident Adult












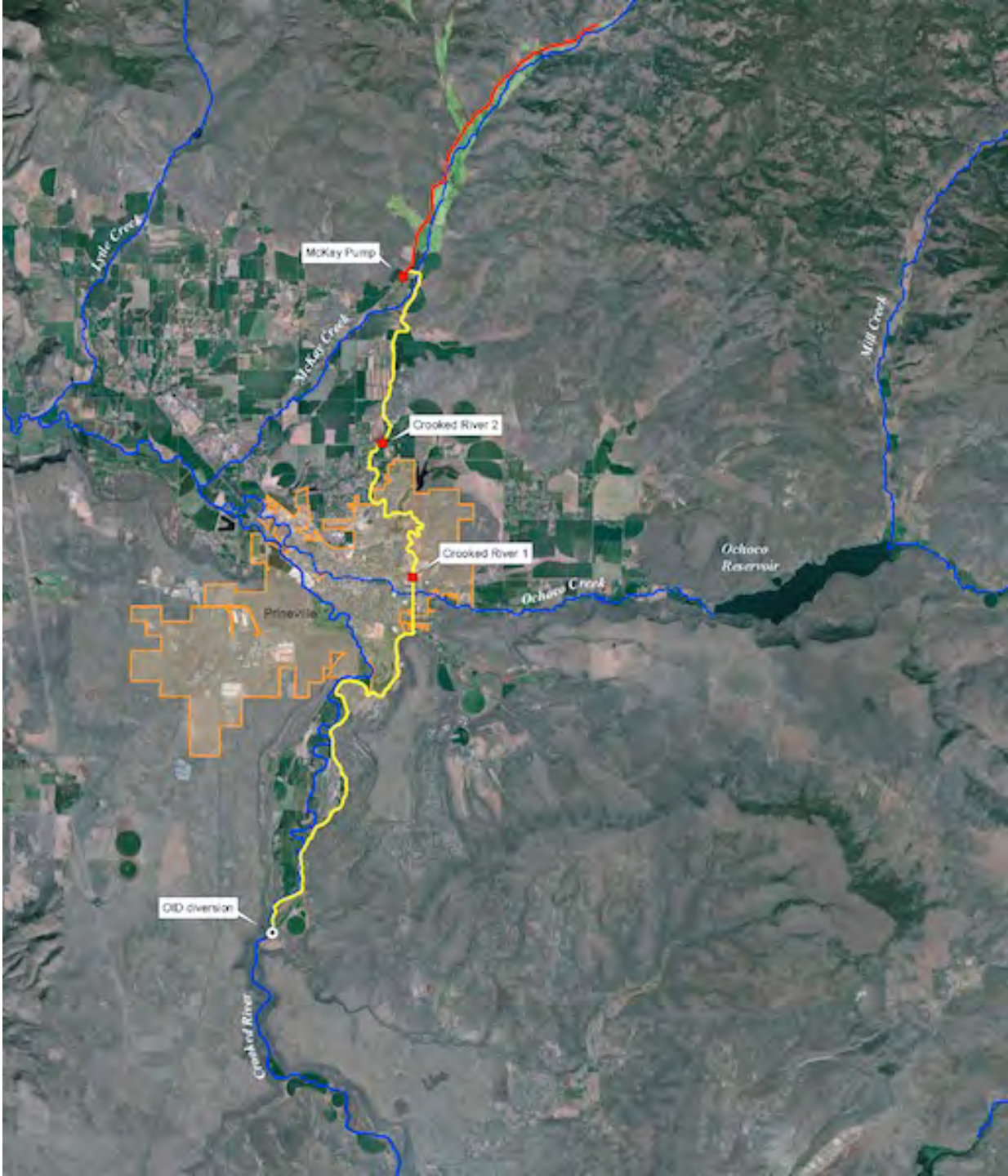
Ochoco Irrigation District

-  Existing canal - to be improved
-  Existing infrastructure - to be piped
-  Proposed infrastructure - to be piped
-  Infrastructure to be decommissioned

-  Proposed Pumping Station
-  Direction of water delivery
-  Planning Watershed Area
-  Ochoco Irrigation District
-  Excluded from Proposed Action



Source: FCA, NHD, ODOT
 OI/ID EA Piping Alt.mxd 7/29/2020



Phase One – Crooked River Pump Station #1 and Inlet Pipe



Local Partners



Oregon State University
Extension Service
Crook County



Questions?



DESCHUTES RIVER
CONSERVANCY

RAISE THE DESCHUTES SEMINAR SERIES SPONSORSHIP OPPORTUNITIES

Presenting Sponsorship \$4,000

This anchoring sponsor for the entire series will receive brand recognition throughout the year. This sponsorship secures our venue, Open Space Event Studios, for the series with options for banners, on stage introduction, and online recognition. There is one Presenting Sponsor spot available.

Contributing Sponsorship \$2,500

This sponsorship helps to increase access to the series for the the general public. Sponsors at this level allow us to offer this learning opportunity at no charge, stream to give access to a broader geographical area, and facilitate the ability to have regional experts remotely share at the seminar series. There are six Contributing Sponsor spots available.

River Partner Sponsorship \$400

This sponsorship offers a special opportunity to our river community partners, such as outfitters, guides, and smaller river-related businesses, who are in the position to invest in our mission and educational opportunities through in-kind donations and smaller cash contributions. River Partners will coordinate with DRC to design a cash contribution and/or in-kind donation of a river related experience to be raffle off at one or more events.

Sponsorship Contact: Rebekah Altman rebekah@deschutesriver.org